

# Inventory Control Form

## Orthopaedic Cable System



Patient Information:

SYNTHES (USA)  
To Order: (800) 523-0322

SYNTHES (Canada) Ltd.  
To Order: (800) 668-1119

Date: \_\_\_\_\_

Hospital: \_\_\_\_\_

Surgeon: \_\_\_\_\_

Procedure: \_\_\_\_\_

### Implants

#### Cables with Crimp

##### Stainless Steel

298.800.01S 1.0 mm diameter, 750 mm, sterile



298.801.01S 1.7 mm diameter, 750 mm, sterile

298.801.10S 1.7 mm diameter, 750 mm, sterile (10/pkg.)

##### Titanium

498.800.01S 1.0 mm diameter, 750 mm, sterile

##### Cobalt Alloy

**1.7 mm diameter CoCr Cable  
with Titanium Crimp, 750 mm, sterile**

611.105.01S Single pack

#### Cerclage Positioning Pins

##### Threaded

##### Stainless Steel

298.803S 4.5 mm, sterile

298.838S 3.5 mm, sterile



##### Titanium

498.803S 4.5 mm, sterile

498.838S 3.5 mm, sterile

##### Nonthreaded

##### Stainless Steel

298.837S 3.5 mm, sterile

298.839S 4.5 mm, sterile



##### Titanium

498.837S 3.5 mm, sterile

498.839S 4.5 mm, sterile

#### Crimp Positioning Pins

##### Stainless Steel

02.221.005S 5.0 mm, sterile

02.221.006S 7.3 mm, sterile



##### Titanium

04.221.005S 5.0 mm, sterile

#### Cerclage Buttons

##### Stainless Steel

02.221.002S T15 StarDrive/2.5 mm Hex, sterile  
(Replaces 298.804 and 298.804S)

02.221.003S T25 StarDrive/3.5 mm Hex, sterile  
(Replaces 298.805 and 298.805S)

02.221.004S Cannulated 4.0 mm Hex, sterile



##### Titanium

04.221.002S T15 StarDrive/2.5 mm Hex, sterile  
(Replaces 498.804 and 498.804S)

04.221.003S T25 StarDrive/3.5 mm Hex, sterile  
(Replaces 498.805 and 498.805S)

04.221.004S Cannulated 4.0 mm Hex, sterile

## Miscellaneous Implants

### Kirschner Wires

<input type="checkbox"/>	292.16	1.6 mm, trocar point, 150 mm (10/pkg.)
<input type="checkbox"/>	292.20	2.0 mm, trocar point, 150 mm (10/pkg.)

## Instruments

### Drill Bits <sup>◇</sup>

<input type="checkbox"/>	310.19	2.0 mm, quick coupling, 100 mm
<input type="checkbox"/>	310.31	3.2 mm, quick coupling, 145 mm
<input type="checkbox"/>	310.35	3.5 mm, quick coupling, 110 mm

### Cable Cutter with Trigger Handle

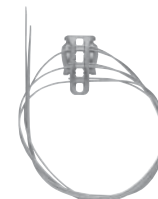
<input type="checkbox"/>	03.221.008	Blade for Cable Cutter
--------------------------	------------	------------------------



## Trochanteric Reattachment Devices

### Titanium, with Cobalt Chromium Cables

<input type="checkbox"/>	498.806S	Standard, 51 mm, sterile
--------------------------	----------	--------------------------



<input type="checkbox"/>	498.807S	Long, 135 mm, sterile
--------------------------	----------	-----------------------



## 5.0 mm Periprosthetic Locking Screws

### T25 StarDrive recess, self-tapping <sup>◇</sup>

#### Stainless Steel



		LENGTH
<input type="checkbox"/>	02.221.508	8 mm
<input type="checkbox"/>	02.221.510	10 mm
<input type="checkbox"/>	02.221.512	12 mm
<input type="checkbox"/>	02.221.514	14 mm
<input type="checkbox"/>	02.221.518	18 mm

#### Titanium

		LENGTH
<input type="checkbox"/>	04.221.508	8 mm
<input type="checkbox"/>	04.221.510	10 mm
<input type="checkbox"/>	04.221.512	12 mm
<input type="checkbox"/>	04.221.514	14 mm
<input type="checkbox"/>	04.221.518	18 mm