



CMF

COMPANIES OF *Johnson & Johnson*

**FACIAL RECONSTRUCTION:**  
Completely Reimagined

**TRUMATCH® CMF**  
Comprehensive Solutions  
in Facial Reconstruction

**TruMatch®**  
PERSONALIZED SOLUTIONS

# TRUMATCH® CMF COMPREHENSIVE SOLUTIONS IN FACIAL RECONSTRUCTION

**TRUMATCH® CMF Solutions** deliver advanced technology and procedural support for facial reconstruction, orthognathic surgery, distraction and cranial reconstruction.

***Our total solution seamlessly integrates virtual surgical planning, intraoperative tools and patient specific devices to help you achieve your goals of:***

**Accuracy**—through visualization of anatomy and identification of surgical challenges within a 3D planning environment, intraoperative tools to accurately transfer the plan to the OR, and customized implants

**Efficiency**—through pre-operative planning assisted by experienced clinical engineers to optimize preparation, surgical time and the number of procedural steps

**Patient Benefit**—through seeking to achieve satisfying aesthetic results and minimizing operative time

**Contact your DePuy Synthes CMF Consultant  
or call 866-332-7486**

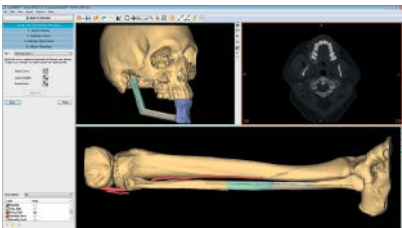
**[www.synthescustomization.com](http://www.synthescustomization.com)**

# PREOPERATIVE PLANNING SERVICES

## **ProPlan CMF®\***

Technology for precise and accurate surgical planning enables:

- Preoperative visualization of the patient anatomy and condition
- Virtual simulation and optimization of the skeletal osteotomies and reconstruction
- Facilitates communication between patient and surgery team
- Reduced surgical time
- Improved OR efficiency
- Comparison of preoperative plan and postoperative results
- Visualization of skeletal and soft tissue relationships



# INTRAOPERATIVE TOOLS

## **Patient-specific surgical guides and splints**

Designed to assist with osteotomies and to accurately transfer the preoperative plan to the surgical site.

Some examples include:

- Distraction positioning guides
- Orthognathic splints
- Graft harvesting guides
- Mandible and midface resection guides



## **Anatomic models**

- Tactile representation of the anatomy or preoperative plan for surgical simulation and communication to the patient
- Available in acrylic or polyamide to meet your specific need



# CUSTOMIZED IMPLANTS

## Patient Specific Implants (PSI)

Patient Specific Implants are derived from CT data for excellent reconstructive results:

- Satisfying aesthetic results for surgeon and patient
- Better anatomic fit versus conventional fixation/reconstruction methods
- Reduced operating time compared to traditional reconstruction methods that require extensive contouring




## Patient Specific Plates for Mandible

Customized to fit the patient anatomy

- Milled-to-finish plate eliminates induced mechanical stresses as compared to bent plates
- Improved strength with lower profile<sup>†</sup>
- Choose the plate and screw hole position and angle to avoid critical structures
- Surgical guides with built-in drill guide align the plate holes and position of the plate to match the virtual surgical plan



<sup>†</sup>Patient Specific Plate for Mandible fatigue testing data shows increased fatigue life of both 2.0 mm and 2.5 mm profiles in comparison with MatrixMANDIBLE™ 2.5 mm thick plates. Bench test result, may not necessarily be indicative of clinical performance. Test data on file at *DePuy Synthes CMF*.

\* ProPlan CMF products and services manufactured by **Materialise**   
innovators you can count on

\*\* Toro, C., Robiony, M., Costa, F., Zerman, N., and Politi, M., (2007).  
Feasibility of preoperative planning using anatomical facsimile models  
for mandibular reconstruction. Head and Face Medicine, Volume 3,  
Number 5.

**Limited Warranty and Disclaimer:** DePuy Synthes CMF products are sold with a limited warranty to the original purchaser against defects in workmanship and materials. Any other express or implied warranties, including warranties of merchantability or fitness, are hereby disclaimed.

**WARNING:** In the USA, this product has labeling limitations. See package insert for complete information.

**RX only.**

Not all products are currently available in all markets.



**DePuy Synthes**

CMF

*People inspired™*

COMPANIES OF *Johnson & Johnson*

*Manufactured by*  
*(United States)*

**DePuy Synthes CMF**

1302 Wrights Lane East  
West Chester, PA 19380  
Telephone: (610) 719-5000  
To order: (800) 523-0322

[www.depuyssynthes.com](http://www.depuyssynthes.com)

*Legal Manufacturer*  
*(Canada)*

**Synthes (Canada) Ltd.**

2566 Meadowpine Boulevard  
Mississauga, Ontario L5N 6P9  
Telephone: (905) 567-0440  
To order: (800) 668-1119  
Fax: (905) 567-3185