



# SPEEDTRIAD™

IMPLANT

## MEDIAL TECHNIQUE OVERVIEW

1



Expose the distal first metatarsal head and perform a medial exostectomy. Perform the osteotomy with the angle of the osteotomy according to surgeon preference and shift the metatarsal head laterally until the desired correction is achieved. Hold the osteotomy reduction with a temporary 0.045" K-wire and remove the proximal medial overhanging bone to create a flat surface for the implant.

**Note:** The K-wire needs to be inserted in such a way so that it does not interfere with the fixation.

2



Determine the correct implant size and shape by using the BME® SpeedTriad™ Implant Sizing Guide (SG-2). The single leg of the implant will be placed proximally and the dual legs distally. If desired, use a sterile marker through the holes of the Sizing Guide to mark the positions of the drill holes.

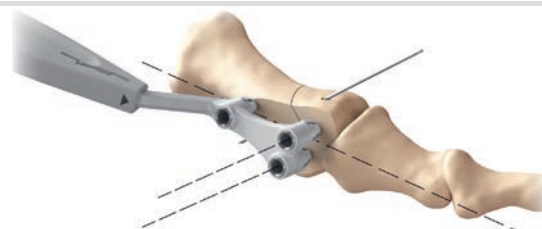
**Note:** The implant is available with centralized legs and offset distal legs.

3



Open the chosen Implant Kit and its corresponding Drill Kit (DK-200T). Connect the Drill Guide Tip, located in the Implant Kit, to the Drill Guide Handle located in the Drill Kit.

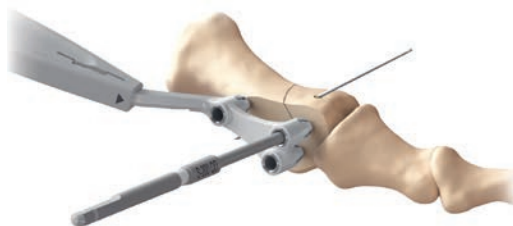
4



While ensuring that the bone segments are in full contact, place the Drill Guide Assembly across the osteotomy site. The implant should be positioned such that the apex of the osteotomy lies between the two distal legs.

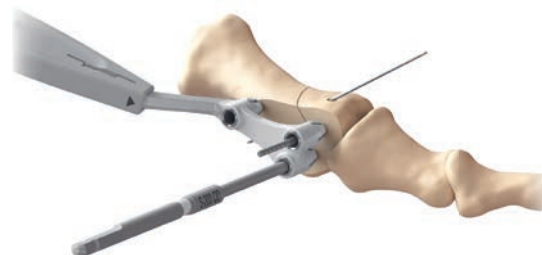
**Note:** The orientation of the guide should prevent inadvertent perforation of the metatarsal head into the joint when making the drill holes. The axis of the Drill Guide must be perpendicular to the osteotomy and the metatarsal head. All three prongs of the Drill Guide should be in contact with bone at all times while drilling.

5



Drill the first hole on the distal side using the Drill Bit provided in the Drill Kit until the positive stop is reached.\*

6



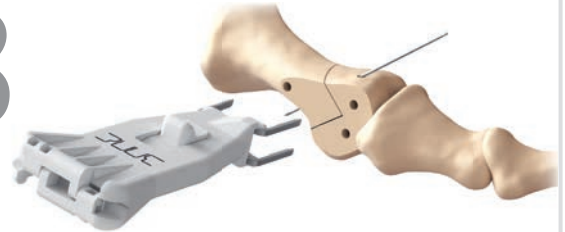
Insert a Pull Pin into the first distal hole and drill the second distal hole.

# 7



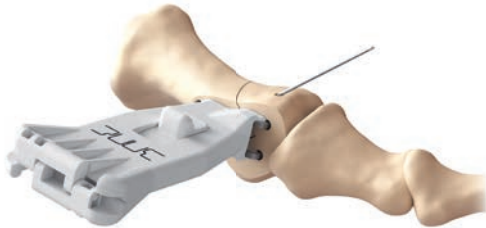
Insert a Pull Pin into the second distal hole, and while ensuring that the bone segments are in full contact, drill the proximal hole. The Drill Guide Assembly can be removed leaving the Pull Pins in place to mark the position of the drill holes.

# 8



Remove the Insertion Tool containing the SpeedTriad Memory Implant from the implant package. Remove the Pull Pins from the pre-drilled holes and align the tips of the legs of the SpeedTriad Memory Implant parallel with the drill holes.

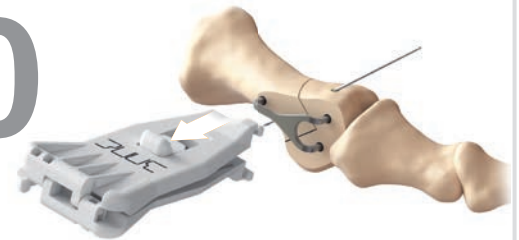
# 9



Insert the SpeedTriad Memory Implant as far as possible into the pre-drilled holes.

**Note:** To ensure proper implant placement, fluoroscopy may be used prior to releasing the implant.

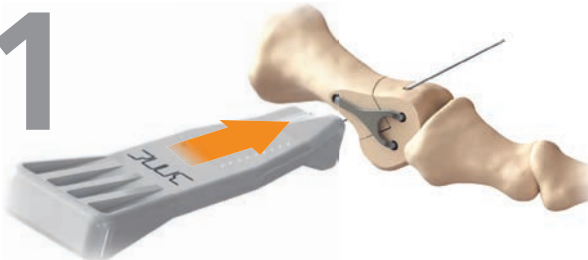
# 10



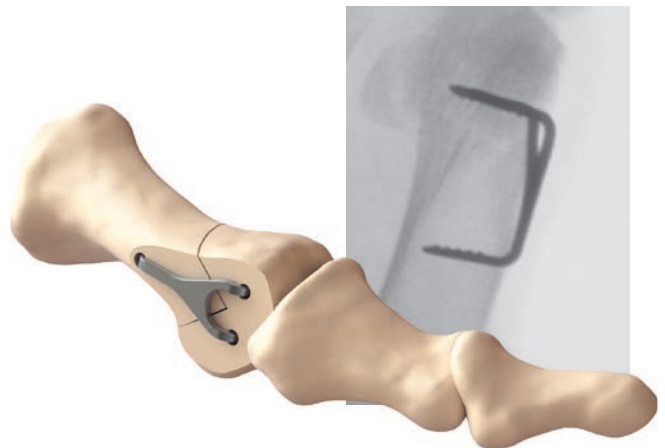
Pull the slider button away from the implant to release the implant from the Insertion Tool.

**Note:** After pulling the slider button, move the Insertion Tool proximally to aid in release.

# 11



Align the supplied Tamp with the bridge of the implant, and while stabilizing the metatarsal head, use the Tamp as needed to completely seat the implant. Remove the provisional K-wire and close using established technique.



The above steps are an overview of the surgical technique. Complete information regarding indications, contraindications, warnings, care and caution can be found in the Instructions For Use.

**REMOVAL:** 1. Expose the site and the bridge of the implant. 2. Using forceps, grasp the center of the implant and remove. If the implant is recessed, then use an elevator to lift the implant bridge and then use forceps to remove the implant. If solidly connected, straight implants can be removed by cutting the center of the bridge of the implant and removing the remnants with an elevator.

\*Depth measurement not required for current BME ELITE® Straight Implant sizes.

Not all products are currently available in all markets.

This publication is not intended for distribution in the USA.

All surgical techniques are available as PDF files at [www.depuysynthes.com](http://www.depuysynthes.com)



BioMedical Enterprises, Inc.  
14785 Omicron Dr., Ste. 205  
San Antonio, Texas 78245 USA



Emergo Europe  
Molenstraat 15  
2514 BH The Hague  
The Netherlands

Synthes GmbH  
Eimattstrasse 3  
4436 Oberdorf  
Switzerland  
Tel: +41 61 965 61 11  
Fax: +41 61 965 66 00  
[www.depuysynthes.com](http://www.depuysynthes.com)