

RAPIDSORB CRANIAL CLAMP

Resorbable fixation of cranial bone flaps

Surgical Technique



 Image intensifier control

This description alone does not provide sufficient background for direct use of DePuy Synthes products. Instruction by a surgeon experienced in handling these products is highly recommended.

Processing, Reprocessing, Care and Maintenance

For general guidelines, function control and dismantling of multi-part instruments, as well as processing guidelines for implants, please contact your local sales representative or refer to:

<http://emea.depuysynthes.com/hcp/reprocessing-care-maintenance>

For general information about reprocessing, care and maintenance of DePuy Synthes reusable devices, instrument trays and cases, as well as processing of DePuy Synthes non-sterile implants, please consult the Important Information leaflet (SE_023827) or refer to:

<http://emea.depuysynthes.com/hcp/reprocessing-care-maintenance>

Table of Contents

Introduction	RapidSorb Cranial Clamp Overview	2
<hr/>		
Surgical Technique		4
<hr/>		
Ordering Information		7

- Notes
- ▲ Precautions
- ▲ WARNINGS

RapidSorb Cranial Clamp Overview

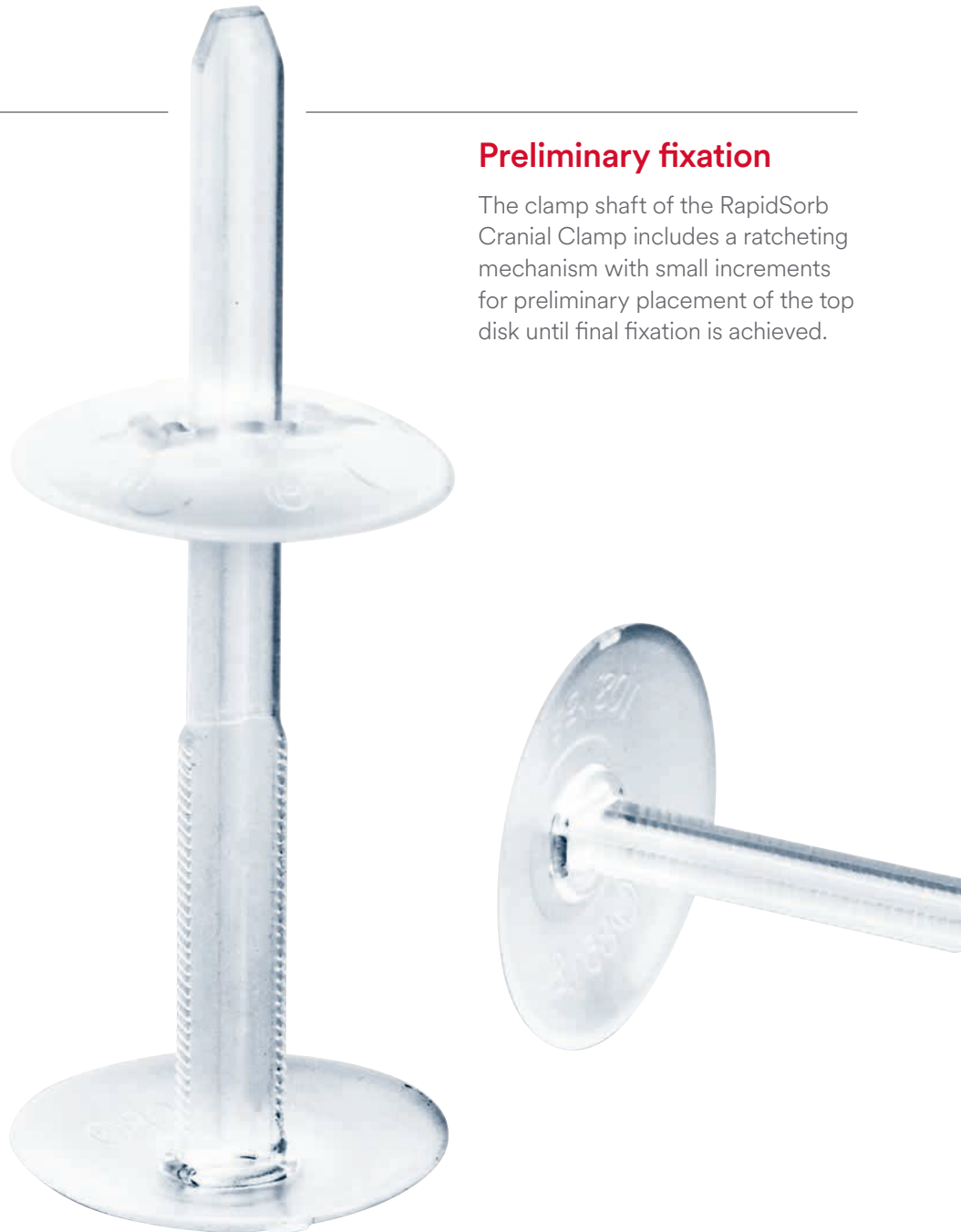
Application

With the RapidSorb Cranial Clamp, there is no need to drill or tap for screw/tack fixation. Instead, the application is a three-step procedure in which the implant is positioned, then intermediately adjusted and finally fixated with the application forceps. For the implantation, only one instrument is required. RapidSorb Cranial Clamp is radiolucent.

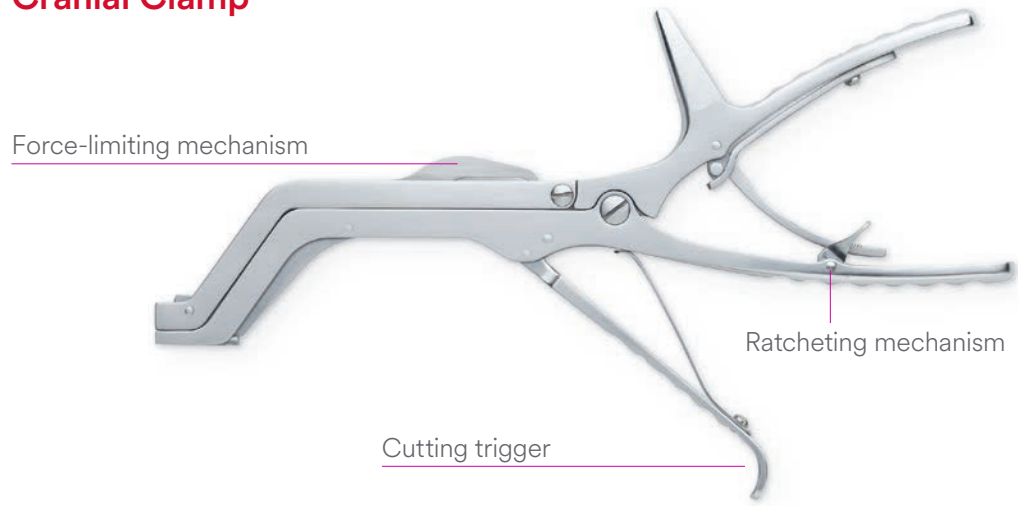
Intended Use, Indications, and Contraindications can be found in the corresponding system Instructions for Use.

Preliminary fixation

The clamp shaft of the RapidSorb Cranial Clamp includes a ratcheting mechanism with small increments for preliminary placement of the top disk until final fixation is achieved.



Application Forceps for RapidSorb Cranial Clamp



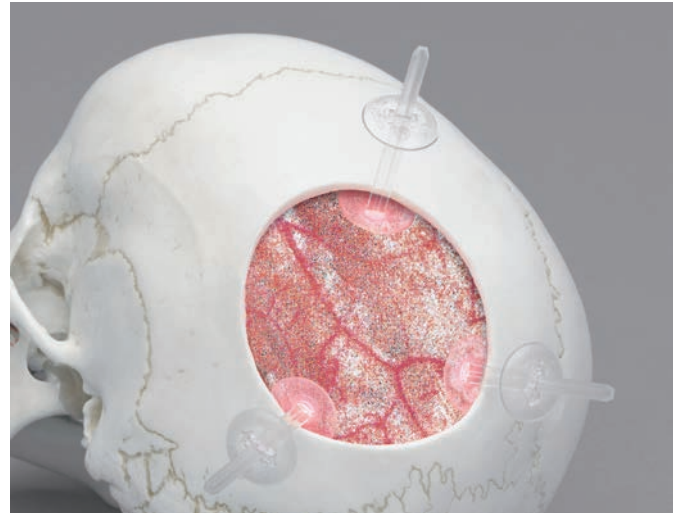
Surgical Technique

1. Place clamps

With the cranial bone flap removed, position the cranial clamps equidistant around the opening. The bottom disk is to be between the dura and the skull.

■ Note:

A minimum of three cranial clamps is required for secure fixation of cranial bone flaps in pediatric patients; a minimum of four for adult patients. Depending on the patient, e.g. adult, and bone flap size, more fixation points are recommended.

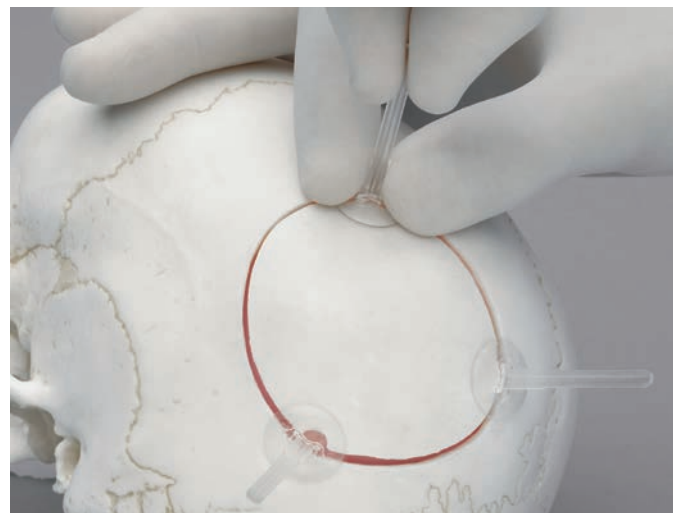


2. Replace the cranial bone flap

Replace the flap, ensuring the shafts of the cranial clamp remain vertical in the kerf.

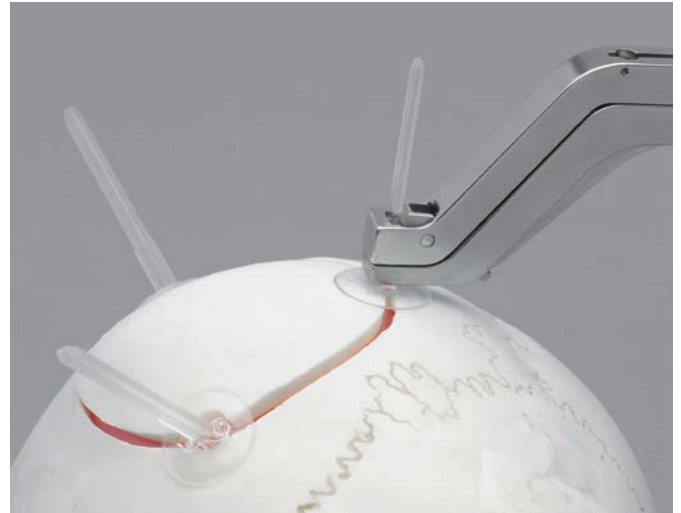
Pretension each clamp by pressing the top disk to the cranial surface. A two-finger pinching technique is suggested.

When using more than three clamps, tighten the clamps in a crisscross pattern.



3. Engage application forceps

Flip the ratcheting mechanism forward to engage. Place the application forceps over a clamp shaft and lower the instrument to the top disk.

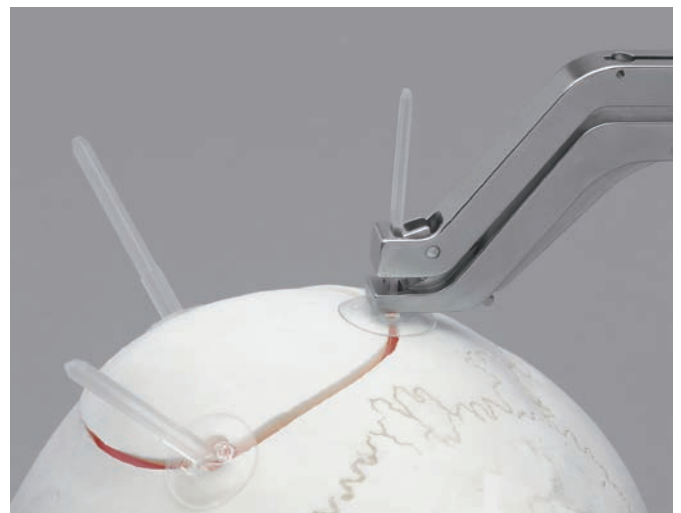


4. Apply tension

Squeeze the instrument handles to tension the cranial clamp.

■ **Note:**

If clamps were not pre-tensioned as described in step 2, the tensioning step may be repeated to fully fixate the clamp.



5. Cut the stem

While maintaining tension on the clamp, cut the stem by squeezing the cutting trigger. After cutting a stem, release the ratcheting mechanism on the instrument.

Repeat steps 3–5 until all clamps have been secured.



6. Removal

To re-enter the cranium postoperatively, per the surgeon's training and discretion a forcep may be used to grasp the top disk of the clamp along the kerf. Release the disk by lifting and rotating it parallel to the kerf. Repeat this procedure with the remaining clamps. The bone flap can now be removed.

■ Notes:

- The RapidSorb Cranial Clamps are single-use only and must be discarded after removal. Use new clamps to reattach the cranial bone flap.
- The kerf must be perpendicular to the surface of the cranium for proper placement of the clamps.
- The clamps are not recommended for kerf widths less than 1.5 mm or greater than 4 mm. Clamps are not recommended for burr holes larger than 10 mm in diameter.



Ordering Information

Implant

851.801.01S	RapidSorb Cranial Clamp, 18mm diameter, sterile, single pack unit
-------------	--



Instrument

329.317	Application Forceps for RapidSorb Cranial Clamp
---------	--

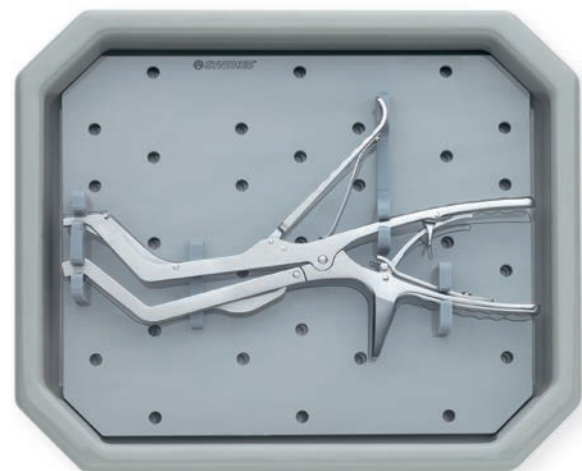


Instrument Tray

305.880	Universal Instrument Tray, large, with Lid, with Insert
---------	--

consisting of:

305.881	Lid
304.686	Instrument Tray
305.882	Insert



Not all products are currently available in all markets.
This publication is not intended for distribution in the USA.
Intended use, Indications and Contraindications can be found in the corresponding system Instructions for Use.
All Surgical Techniques are available as PDF files at www.depuysynthes.com/ifu



Synthes GmbH
Eimattstrasse 3
4436 Oberdorf
Switzerland
Tel: +41 61 965 61 11

www.depuysynthes.com