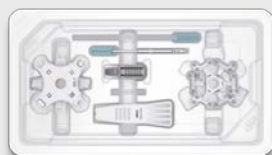
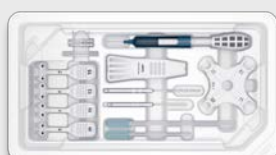


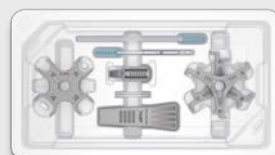
Continuous Compression Implants Drill Kit Transition Guide



DK-200C



DK-200HW



DK-265C



DK-300

DK-200* & DK-200T* → DK-200C Drill Kit

*Available while supplies last



BME SPEED™ Implant Kit

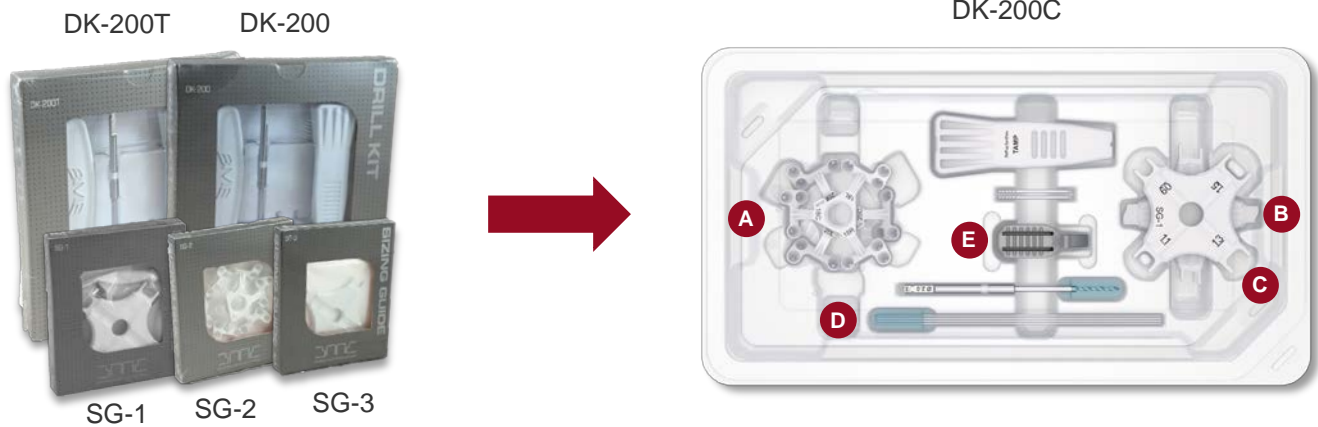


SPEEDARC™ Implant Kit



SPEEDTRIAD™ Implant Kit

Drill Kits



What's Changed?

- DK-200C replaces DK-200 & DK-200T and Sizing Guides are now included for:

A SPEEDTRIAD Implant System

B SPEEDARC Implant System

C BME SPEED Implant System

D K-wires now included, Ø1.14 mm x 152.4 mm length

E Drill Guide Handle Adapter added for backwards compatibility when using DK-200C with BME branded Implant Kits

DK-200* & DK-200T* → DK-200C Drill Kit

*Available while supplies last



BME SPEED™ Implant Kit



SPEEDARC™ Implant Kit



SPEEDTRIAD™ Implant Kit



Drill Guide Adapter Instructions

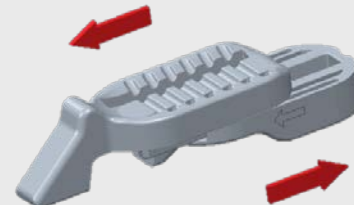
1

Handle Adapter as provided closed in Drill Kit



2

Slide open Handle Adapter until you feel a positive stop



3

Insert tail end of Drill Guide into channel opening



4

Rotate shaft of Drill Guide upward until fully seated in the channel



5

Slide Handle Adapter closed



6



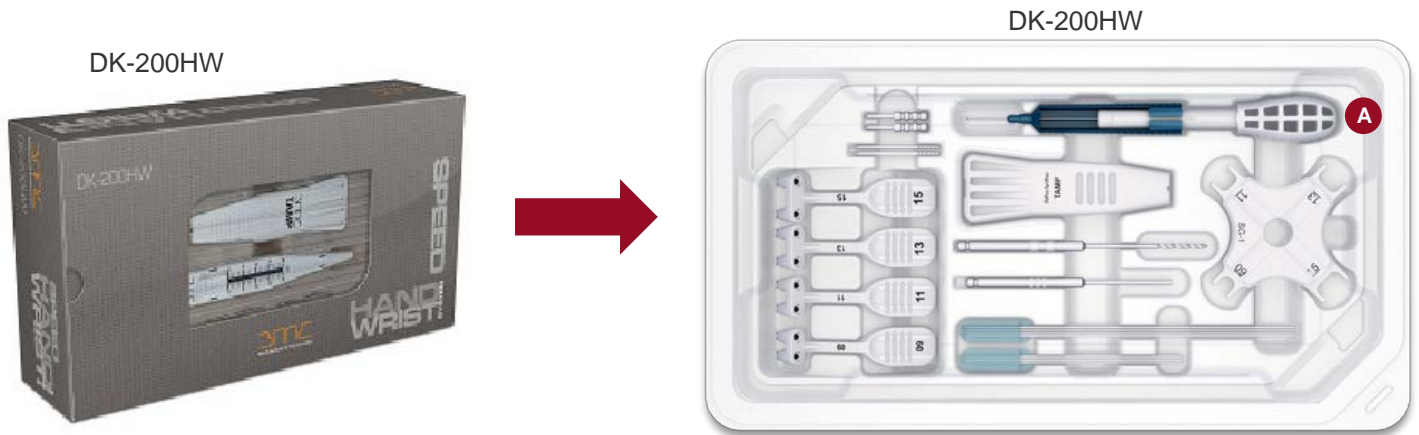
DK-200HW* → DK-200HW Drill Kit

*BME branded DK-200HW available while supplies last



BME SPEED Implant Kit

Drill Kits




What's Changed?

- DePuy Synthes DK-200HW replaces BME branded DK-200HW
- **A** Updated Depth Gauge
 - As silver probe is inserted into drill hole, blue outer casing slides to coordinate with depth measurements listed on white base

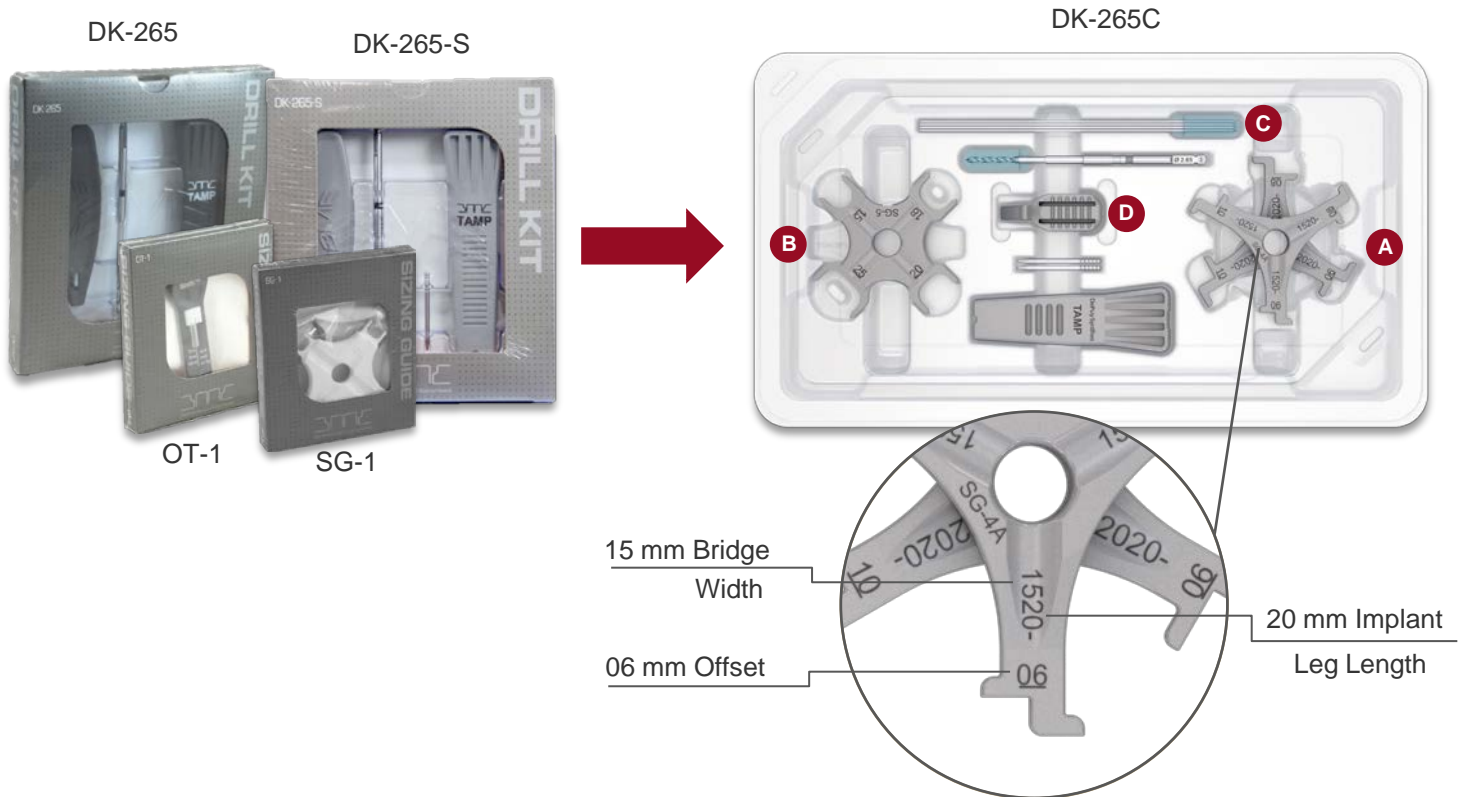
DK-265* & DK-265-S* → DK-265C Drill Kit

*Available while supplies last

 SPEEDSHIFT™ Implant Kit

 SPEEDTITAN™ Implant Kit

Drill Kits



What's Changed?

- DK-265C replaces DK-265 & DK-265-S and Sizing Guides are now included for:

A SPEEDSHIFT Implant System

- Measures both bridge width and offset

B SPEEDTITAN Implant System

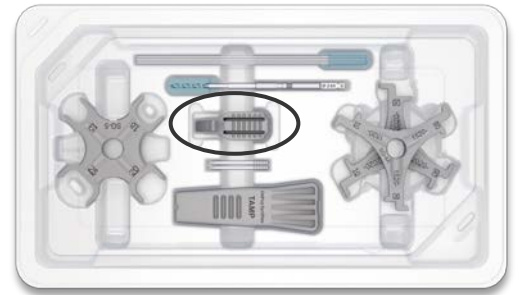
C K-wires now included, Ø1.37 mm x 152.4 mm length

D Drill Guide Handle Adapter added for backwards compatibility when using DK-265C with BME branded Implant Kits

DK-265* & DK-265-S* → DK-265C Drill Kit

*Available while supplies last

-  SPEEDSHIFT™ Implant Kit
-  SPEEDTITAN™ Implant Kit



Drill Guide Adapter Instructions

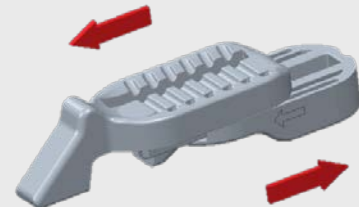
1

Handle Adapter as provided closed in Drill Kit



2

Slide open Handle Adapter until you feel a positive stop



3

Insert tail end of Drill Guide into channel opening



4

Rotate shaft of Drill Guide upward until fully seated in the channel



5

Slide Handle Adapter closed

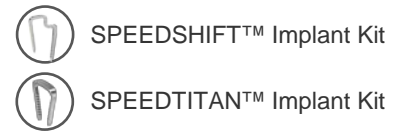


6



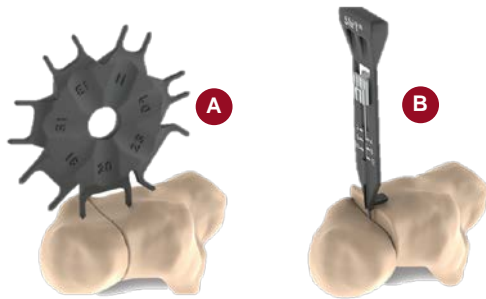
DK-265* & DK-265-S* → DK-265C Drill Kit

*Available while supplies last

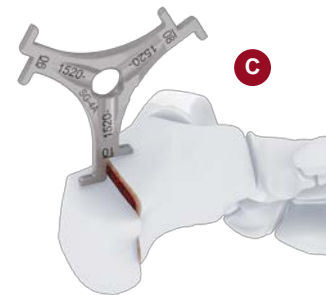


Sizing Guide Instructions

Existing Sizing Guide



Sizing Guide found in DK-265C



Existing Sizing Guide:

Create the osteotomy and measure across the osteotomy site using the Sizing Guide (SG-1) **A** to determine the width of the implant. After obtaining the desired correction, provisionally fixate the osteotomy with a K-wire. Place the extension of the SPEEDSHIFT Implant Offset Sizing Tool (OT-1) **B** on the proximal shelf and slide the pin down to determine the amount of offset required.

Sizing Guide found in DK-265C:

Create the osteotomy. After obtaining the desired correction, provisionally fixate the osteotomy with a K-wire found in Drill Kit DK-265C. Using the Sizing Guides **C**, determine the width and offset required.

DK-300* → DK-300 Drill Kit

*BME branded DK-300 available while supplies last

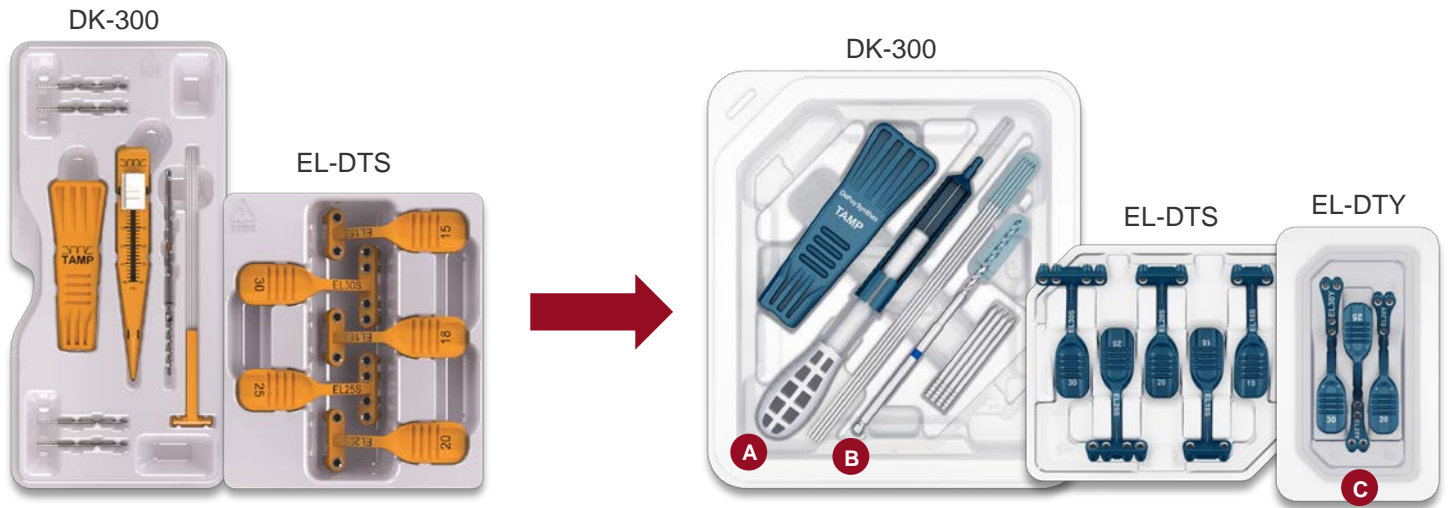


BME ELITE™ Implant Kit



BME ELITE™ Y Implant Kit

Drill Kits



What's Changed?

What's Changed?

- A** DePuy Synthes style Depth Gauge included
 - Silver probe inserted into drill hole, blue outer casing slides to coordinate with depth measurements listed on white base.
- B** Laser etching on Drill Bit removed
- C** EL-DTY Drill Guide Kit added as an NPI for BME ELITE Y Implants