

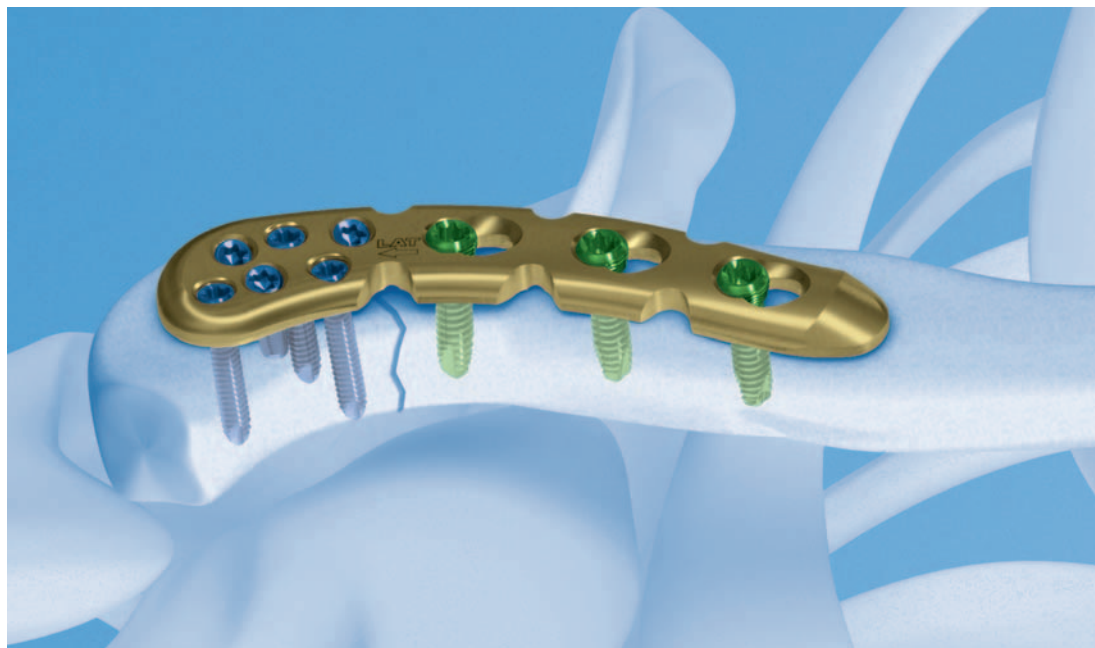
LCP Superior Anterior Clavicle Plate.

The anatomically precontoured fixation system with angular stability for clavicle shaft and lateral clavicle.

Anatomically pre-shaped, twisted design

LCP combi-hole: angular stability and/or compression

Combines strength with ductility



LCP Superior Anterior Clavicle Plate.

The anatomically precontoured fixation system with angular stability for lateral clavicle and clavicle shaft.

Indications



LCP Superior Anterior Clavicle Plate without lateral extension

- Fractures of the clavicle shaft
- Malunions of the clavicle shaft
- Non-unions of the clavicle shaft



LCP Superior Anterior Clavicle Plate with lateral extension

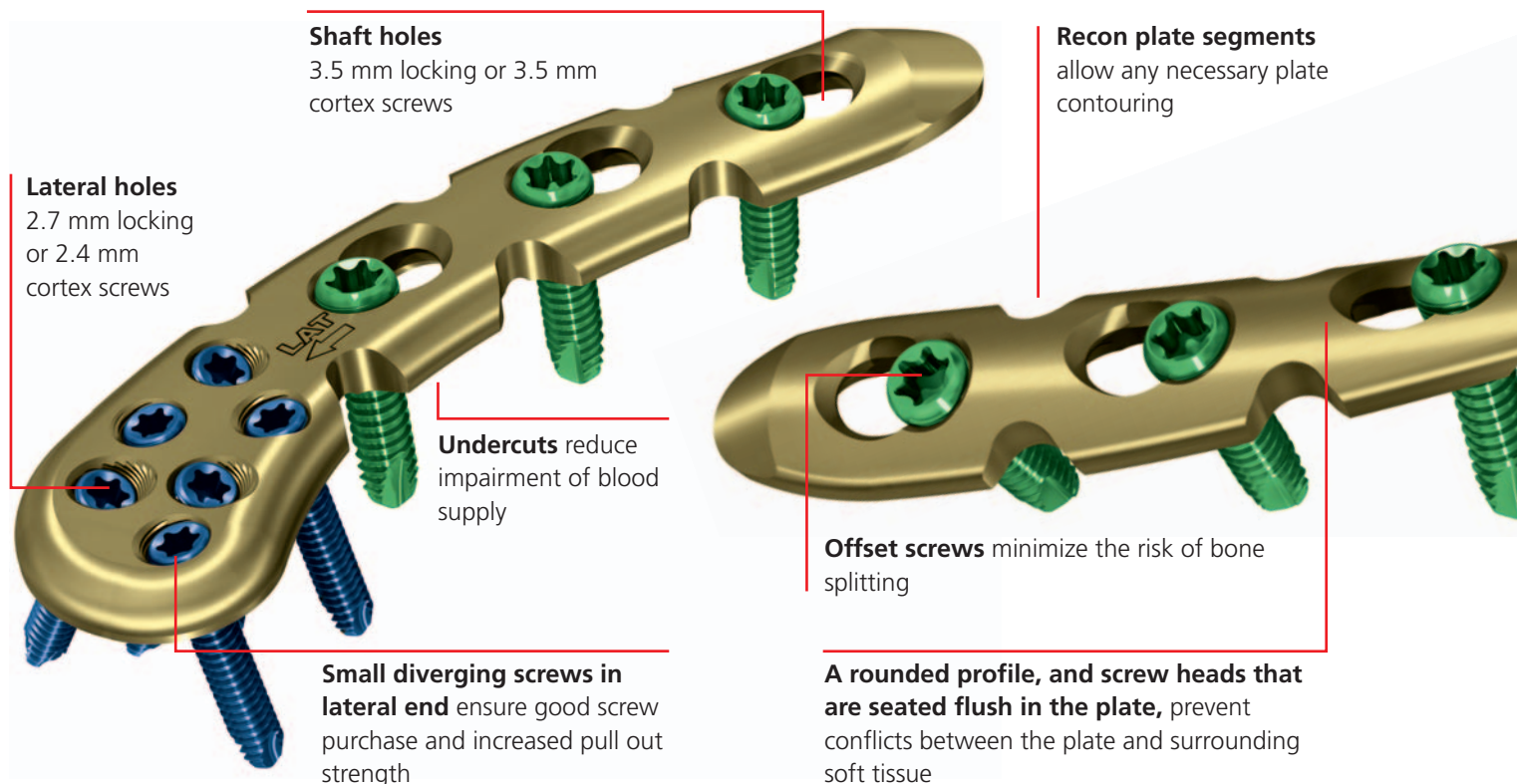
- Fractures of the lateral clavicle
- Malunions of the lateral clavicle
- Non-unions of the lateral clavicle
- Available in longer versions for lateral fractures with associated shaft fractures



Also available:

LCP Clavicle Hook Plate

- Acromioclavicular joint dislocation
- Fractures of the lateral clavicle



Anatomically pre-shaped, twisted design



Lateral superior placement

- Less need to detach muscles than with anterior placement
- Easier plate placement

Medial anterior placement

- Reduces risk of damaging surrounding structures
- Less plate prominence
- Easier drilling and screw insertion under the chin

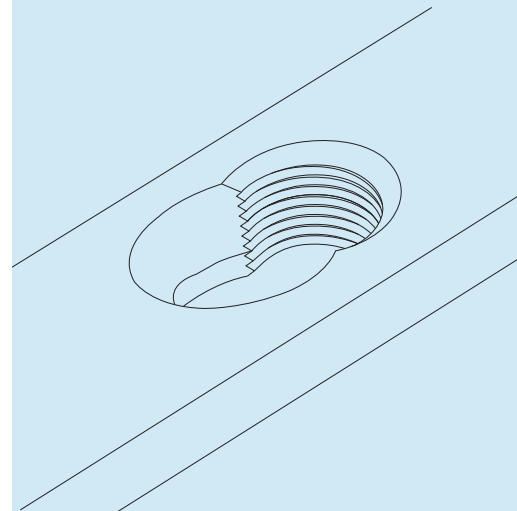
LCP Locking Compression Plate

Angular stable fixation of fragments regardless of bone quality

Minimised risk of primary and secondary loss of reduction, even under high dynamic loading

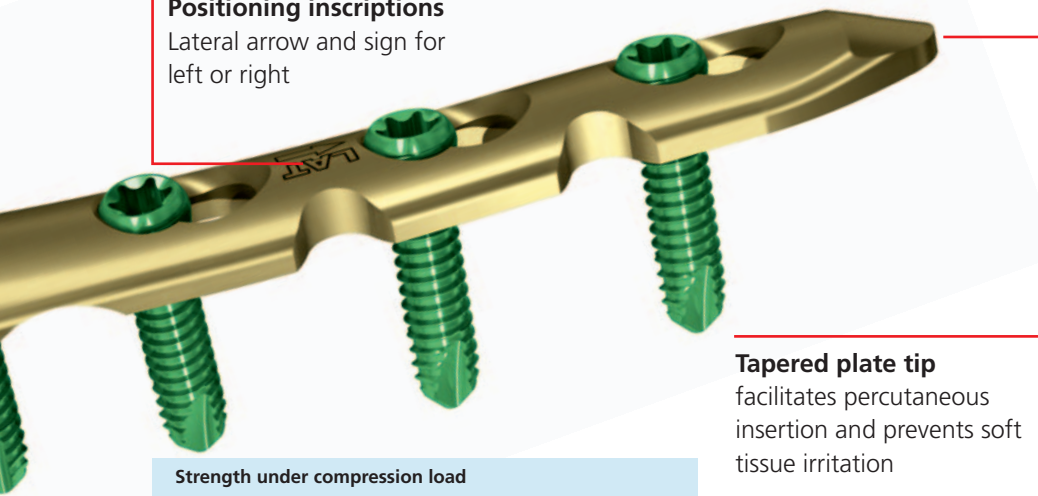
Reduced impairment of periosteal blood supply due to the limited plate contact

Good purchase also in osteoporotic bone and in multifragment fractures



Positioning inscriptions

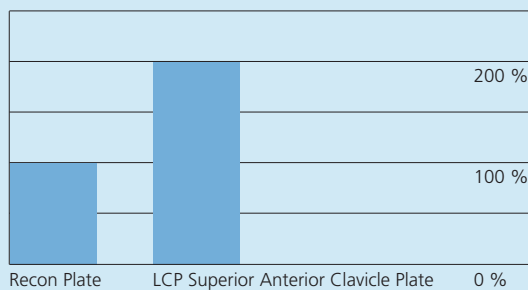
Lateral arrow and sign for left or right



Tapered plate tip

facilitates percutaneous insertion and prevents soft tissue irritation

Strength under compression load



LCP combi-hole

Intraoperative choice between compression and angular stable locking

With standard screws: interfragmental or dynamic-axial compression

With locking screws: stable plate-screw connection without loss of reduction, regardless of plate modelling

LCP Superior Anterior Clavicle Plate.

The anatomically precontoured fixation system with angular stability for clavicle shaft and lateral clavicle.

Ordering information

Plates

LCP Superior Anterior Clavicle Plate 3.5 mm, right	
Art. No.	Holes
OX.112.026	6
OX.112.028	7
OX.112.030	8

LCP Superior Anterior Clavicle Plate 3.5 mm, left	
Art. No.	Holes
OX.112.027	6
OX.112.029	7
OX.112.031	8

LCP Superior Anterior Clavicle Plate 2.7/3.5 mm with lateral extension, right	
Art. No.	Holes
OX.112.006	3
OX.112.010	4
OX.112.012	5
OX.112.008	6
OX.112.018*	7
OX.112.020*	8

LCP Superior Anterior Clavicle Plate 2.7/3.5 mm with lateral extension, left	
Art. No.	Holes
OX.112.007	3
OX.112.011	4
OX.112.013	5
OX.112.009	6
OX.112.019*	7
OX.112.021*	8

Tray

68.112.013	Tray for LCP Superior Anterior Clavicle Plates, for Vario Case
------------	--

Screws

Lateral

X02.214–230	Locking Screw Stardrive \varnothing 2.7 mm (head LCP 2.4), self-tapping, length 14–30 mm
X01.764–780	Cortex Screw Stardrive \varnothing 2.4 mm, self-tapping, length 14–30 mm

Shaft

X12.102–111	Locking Screw Stardrive \varnothing 3.5 mm, self-tapping, length 12–30 mm
or	
X13.012–030	Locking Screw \varnothing 3.5 mm, self-tapping, length 12–30 mm
X04.812–830	Cortex Screw \varnothing 3.5 mm, self-tapping, length 12–30 mm

X=2: stainless steel
X=4: titanium

All plates and screws are also available sterile packed. For sterile implants add suffix "S" to article number.

*Optionally available

